

HANSRAJ COLLEGE
STUDENT FEEDBACK SURVEY RESULTS
2021-2022

Feedback sessions were conducted by each department of the college at the end of the academic year. Students were encouraged to participate in the session responses were received from a total of 2800 students. A total of 35 questions were asked on a 5-point scale such that 4/5 is the highest and 0/1 the lowest response category. The questions covered three broad aspects: teaching learning process, college infrastructure and facilities and overall college environment for student growth.

For teaching learning process, 95% of the students responded that the teaching can be best described as good, very good and excellent. 40 % rated the teaching as excellent. Also 94 % of the students agreed that teachers are thoroughly and satisfactorily prepared for their classes. 84% of the students agreed that teachers mostly use examples and applications to explain concepts. 83 % of the students found teachers to be largely effective in communication. 60% of the students responded that 85 % to 100 % of syllabus is covered in the class. Additionally, 23 % agreed that more than 70% of the syllabus is covered. 49 % of the students found the evaluation to be always fair and 40% found it is usually fair.

The students were asked to rate the following facilities on a scale of 1-5 (1-very poor, 2-poor, 3-average, 4-good and 5-very good):. hostel, sports facility, seminar room/auditorium in college, medical facility, classroom facility, laboratories facilities, library facilities, drinking water/washroom/elevator, security and proctorial services, canteen facilities, student societies, ECA, student support and welfare facilities. The responses were largely ranging from very good to average. For the library facilities 80% of the students have responded that the facilities are very good (5) and good (4).

With regard to the overall environment of the college, students were asked to rate on a 5-point scale (strongly disagree to strongly agree): whether the institution makes effort to engage students in the monitoring, review and continuous quality improvement of the teaching learning process, whether the institution provides multiple opportunities to learn and grow and whether the institute takes active interest in promoting internship, student exchange, and field visit opportunities. In response to these 30-40% strongly agree, 25-30% agree and more than 20% are neutral. The results suggest that largely students

appreciate and benefit from the institutions constant effort to facilitate their growth.

Questions were also included on use of ICT tools by teachers and satisfaction level with ICT platform used during the pandemic and otherwise. It was observed that the use of ICT tools can be expanded further and student experience can be enhanced. Most students agreed that their queries related to ICT platform were addressed.

CHART 1: TEACHER'S APPROACH TO TEACHING CAN BE BEST DESCRIBED AS

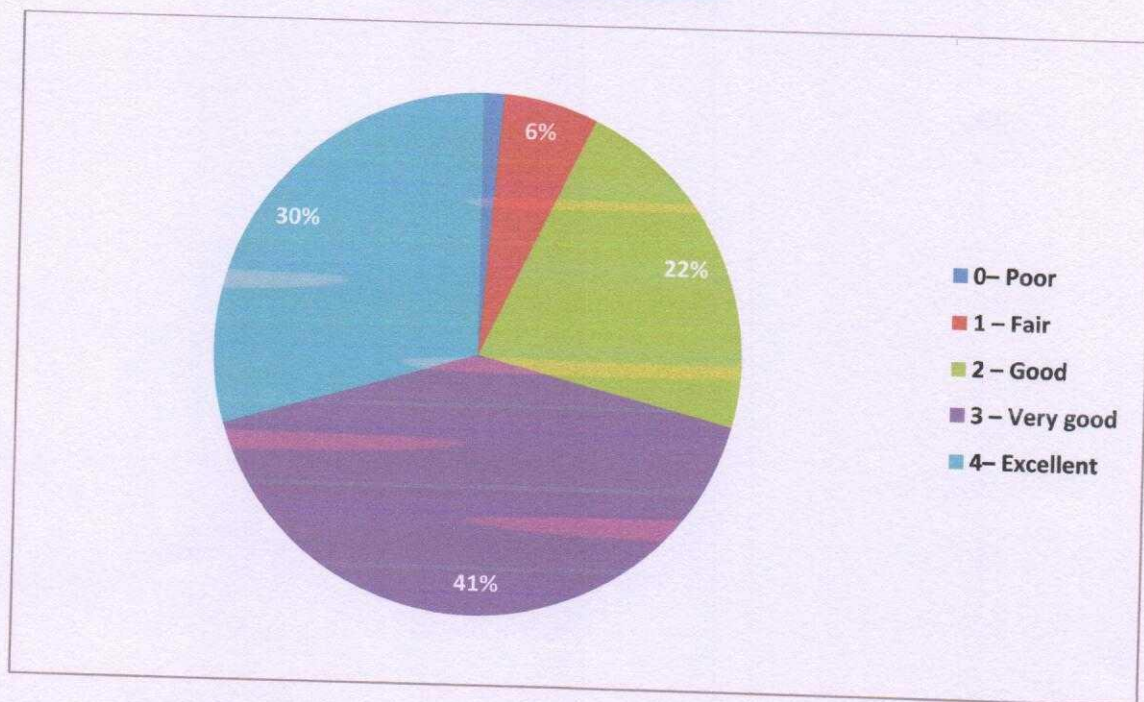


CHART 2: HOW WELL WERE THE TEACHERS ABLE TO COMMUNICATE

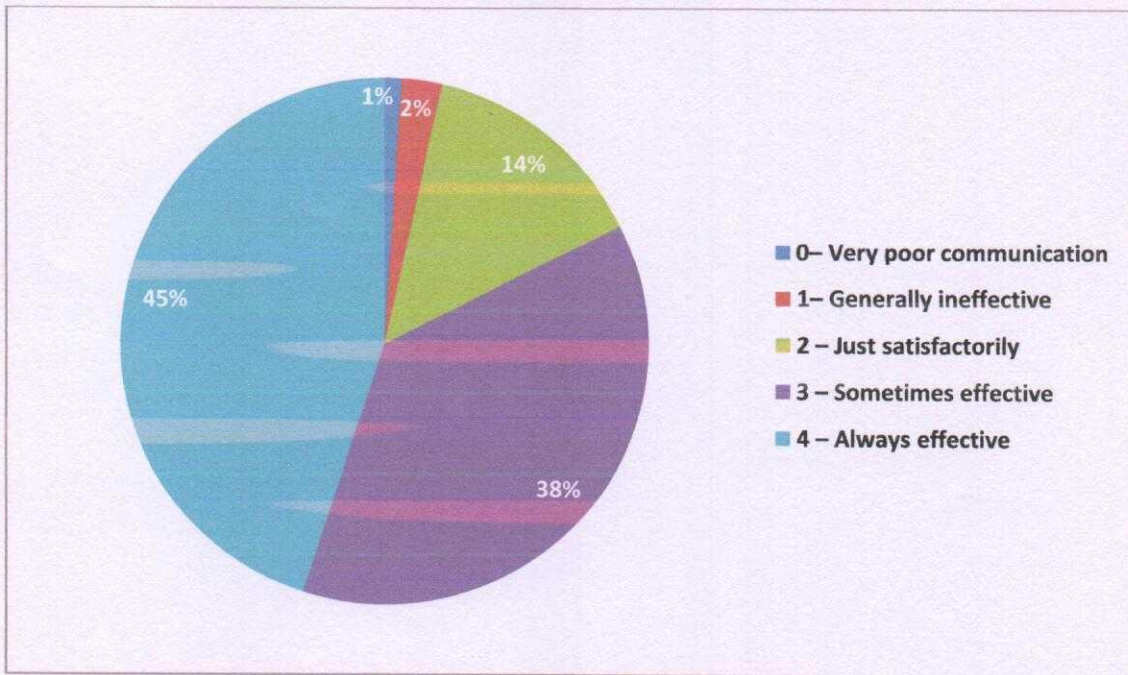


CHART 3: HOW MUCH SYLLABUS WAS COVERED IN THE CLASS

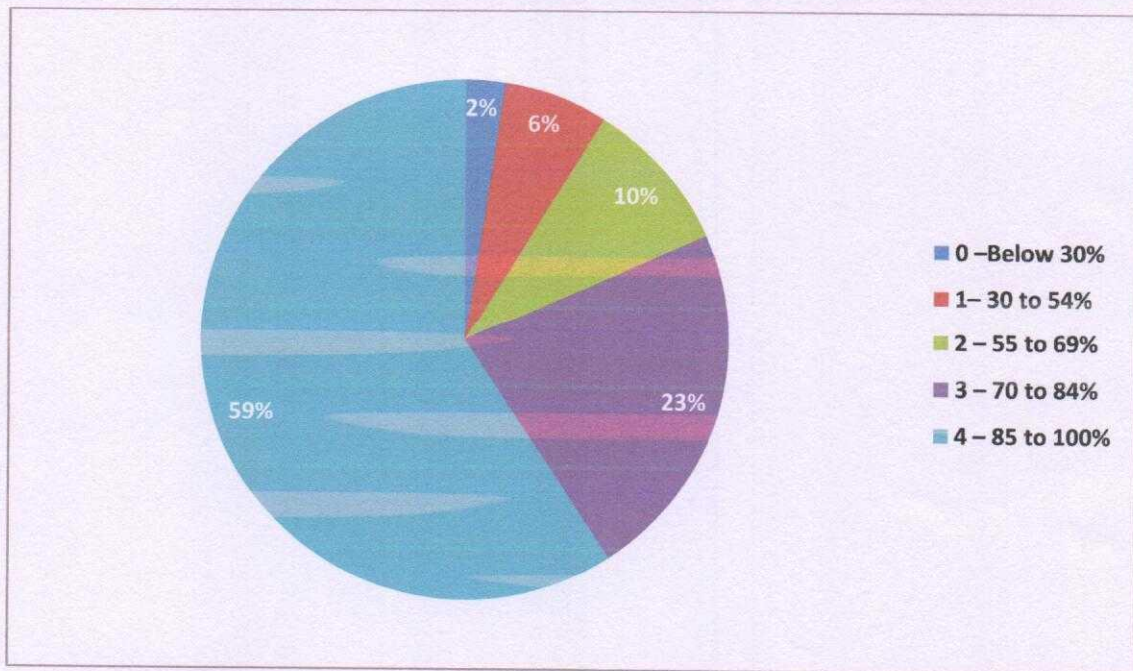


CHART 4: HOW WELL DID THE TEACHER PREPARE FOR THE CLASS

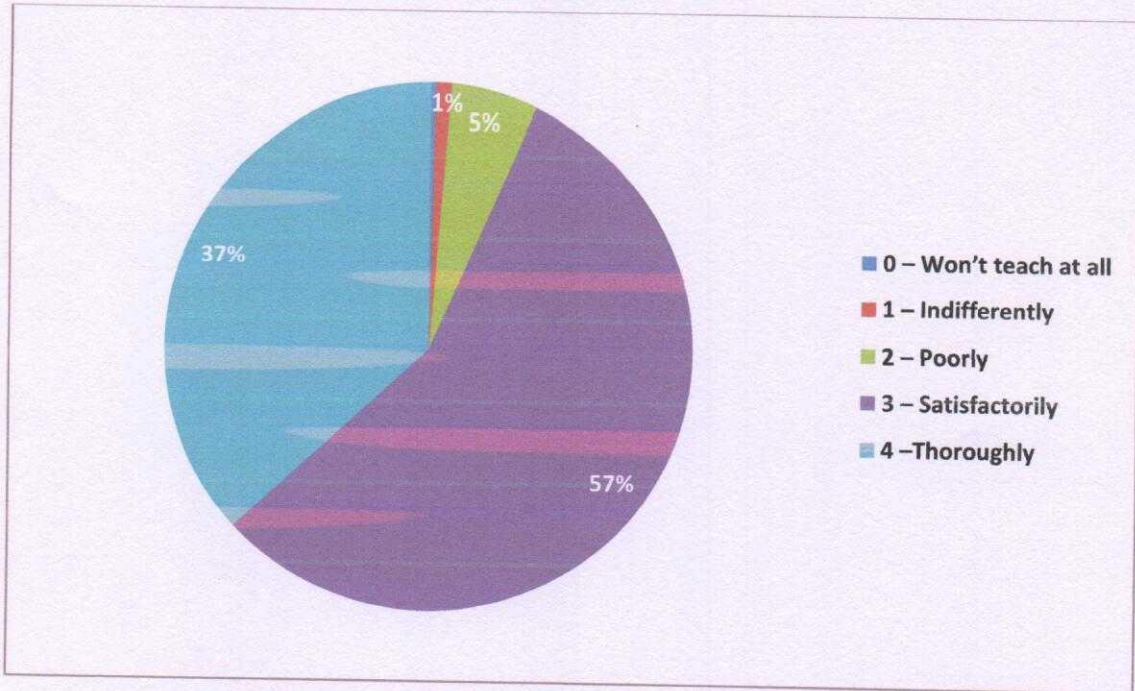


CHART 5: FAIRNESS OF INTERNAL EVALUATION PROCESS BY TEACHERS

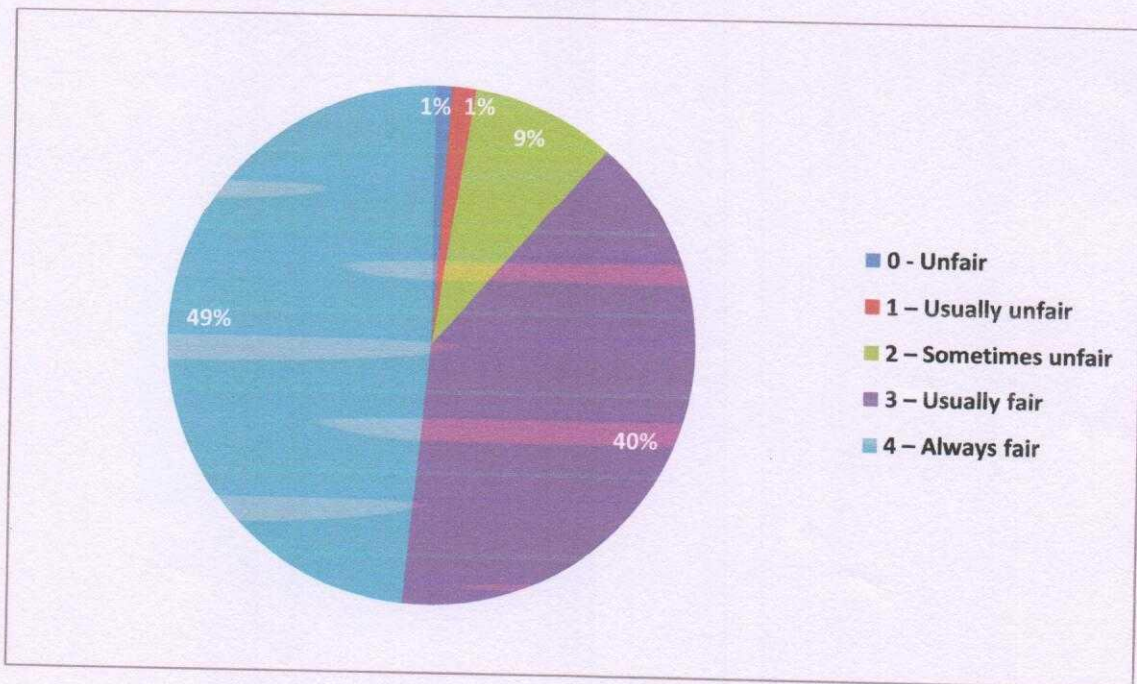


CHART 6: WAS YOUR PERFORMANCE IN ASSIGNMENT DISCUSSED WITH YOU

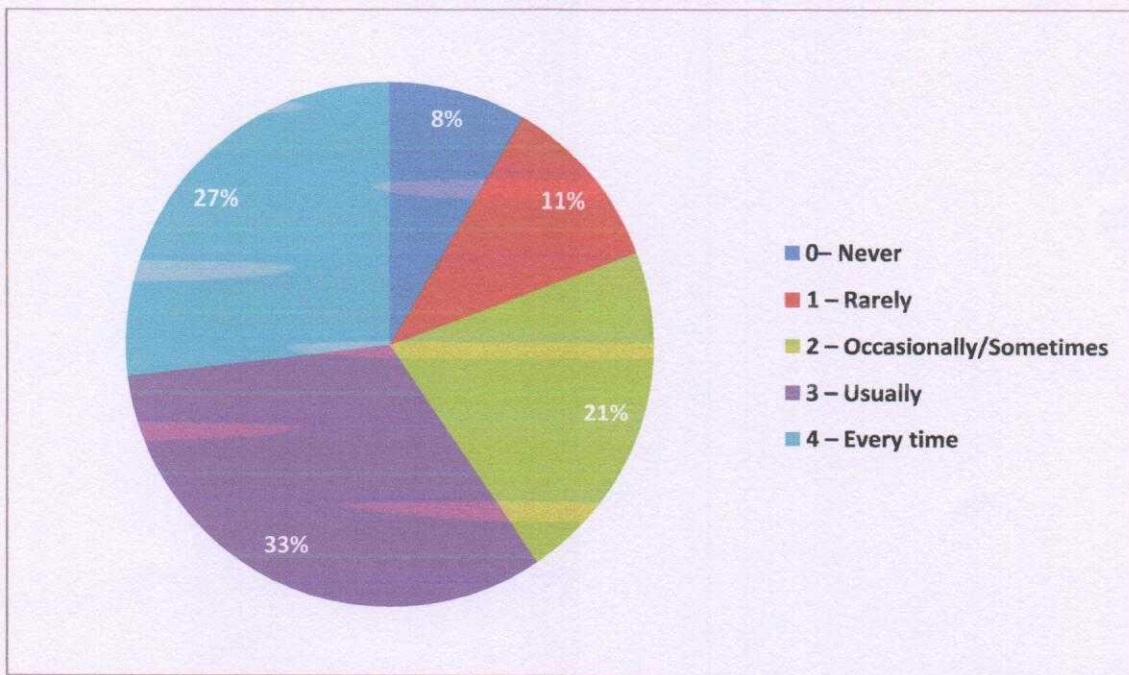
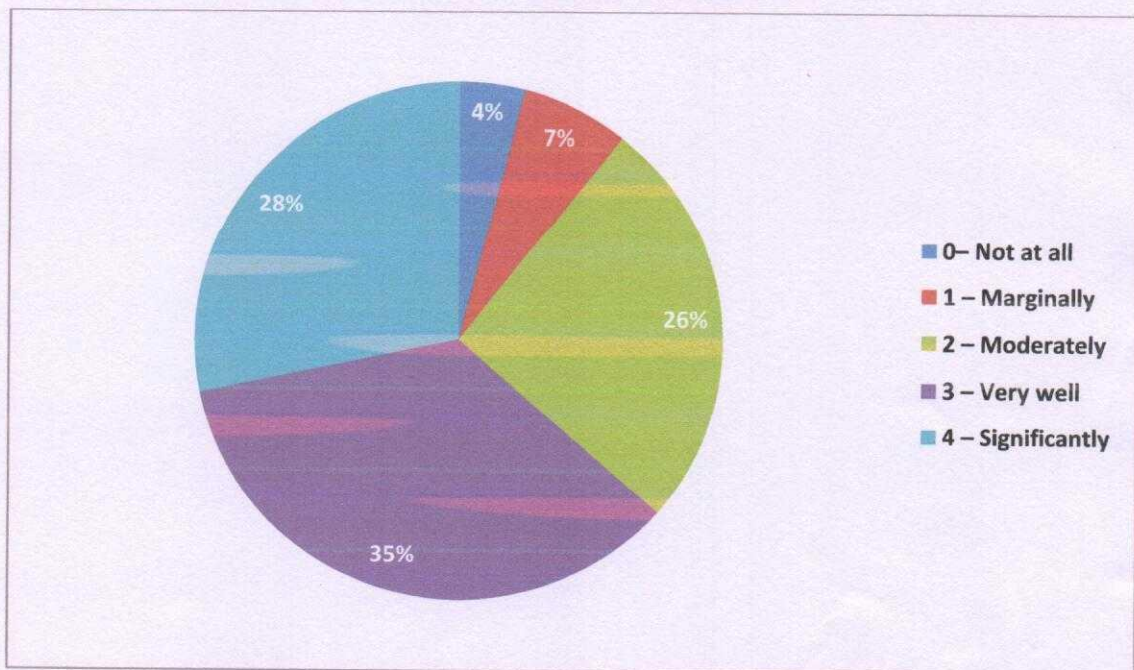
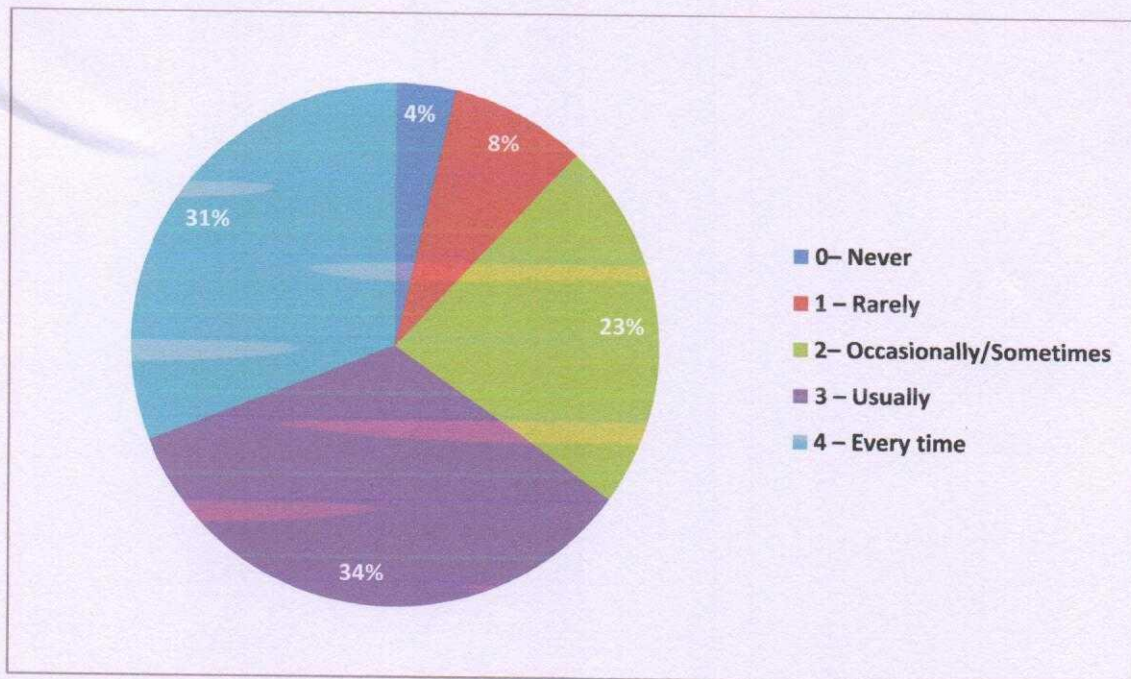


CHART 6: THE TEACHING AND MENTORING PROCESS IN YOUR INSTITUTION FACILITATES YOU IN COGNITIVE, SOCIAL AND EMOTIONAL GROWTH



**CHART 7: TEACHERS INFORM YOU ABOUT YOUR EXPECTED
COMPETENCIES, COURSE OUTCOMES AND PROGRAMME
OUTCOMES**



**CHART 8: YOUR TEACHERS DO A NECESSARY FOLLOW-UP WITH
AN ASSIGNED TASK TO YOU.**

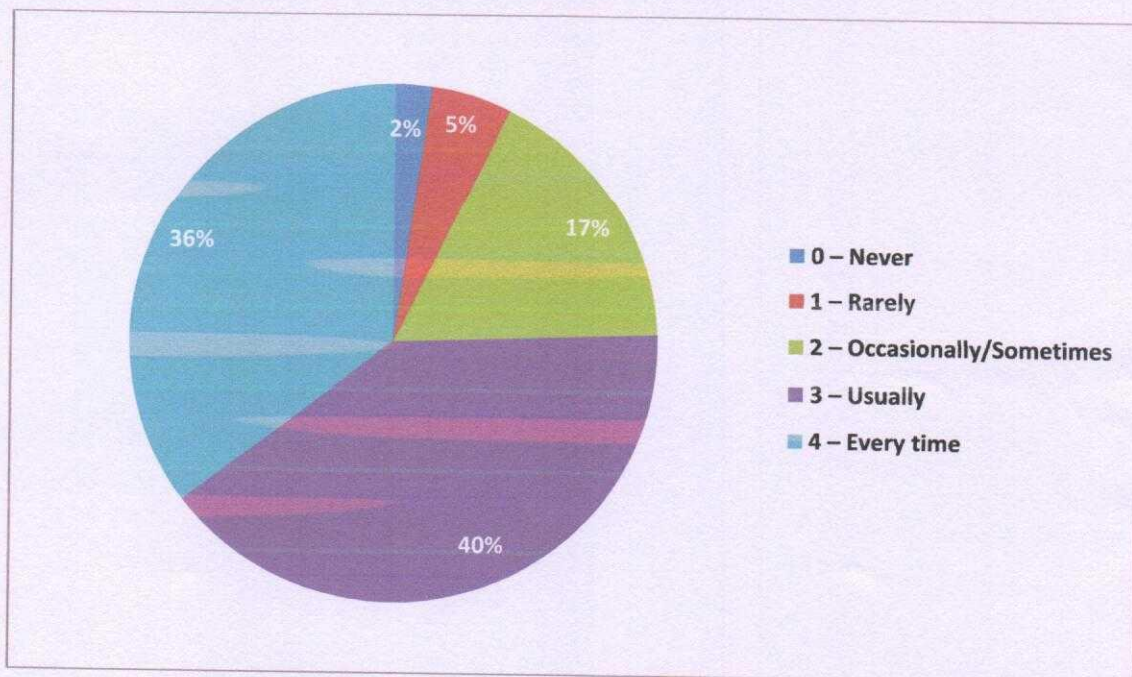


CHART 9: THE TEACHERS ILLUSTRATE THE CONCEPTS THROUGH EXAMPLES AND APPLICATIONS.

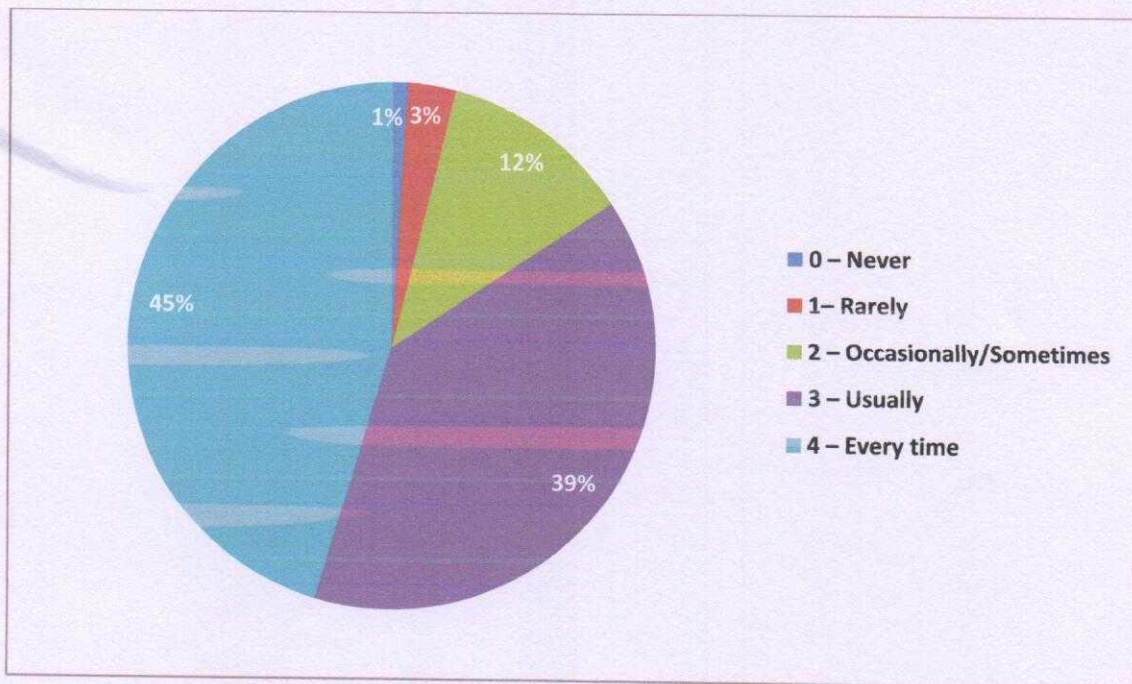


CHART 10: THE TEACHERS IDENTIFY YOUR STRENGTHS AND ENCOURAGE YOU WITH PROVIDING RIGHT LEVEL OF CHALLENGES.

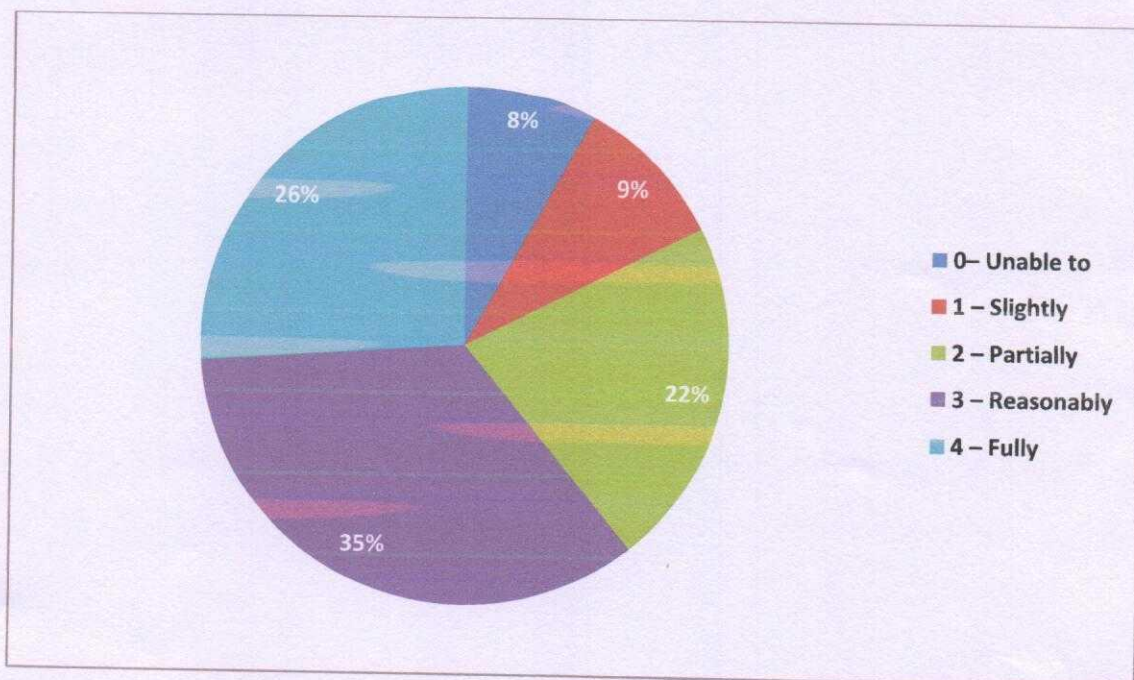


CHART 11: TEACHERS ARE ABLE TO IDENTIFY YOUR WEAKNESSES AND HELP YOU TO OVERCOME THEM.

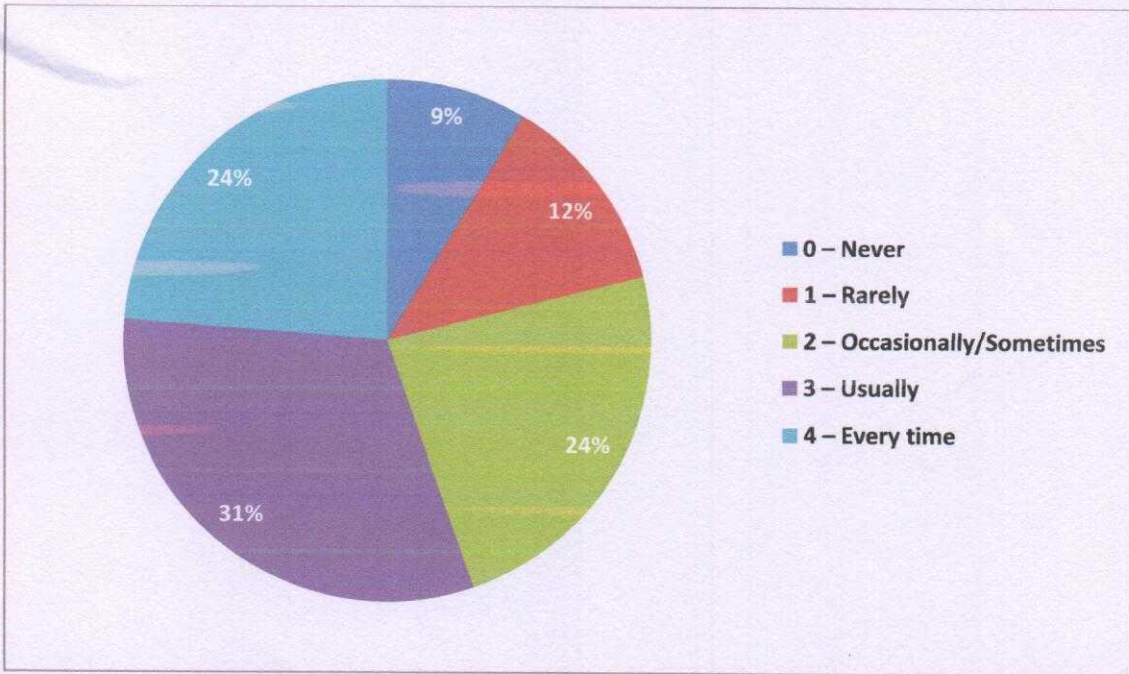


CHART 12: THE INSTITUTE/ TEACHERS USE STUDENT CENTRIC METHODS, SUCH AS EXPERIENTIAL LEARNING, PARTICIPATIVE LEARNING AND PROBLEM-SOLVING METHODOLOGIES FOR ENHANCING LEARNING EXPERIENCES.

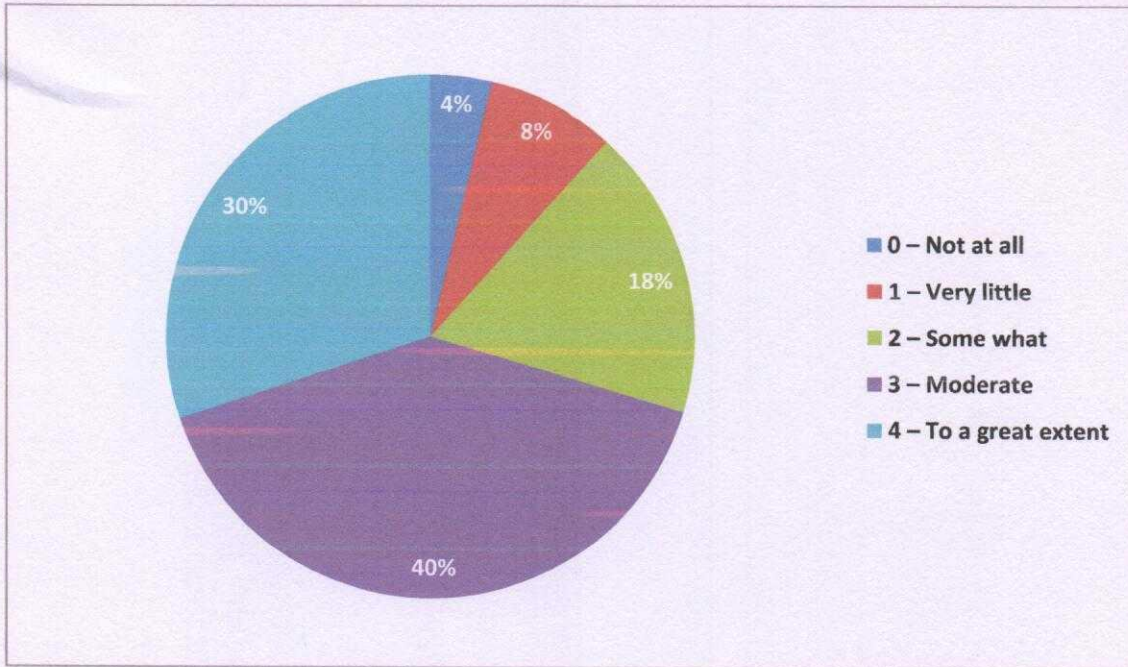


CHART 13: TEACHERS ENCOURAGE YOU TO PARTICIPATE IN EXTRACURRICULAR ACTIVITIES.

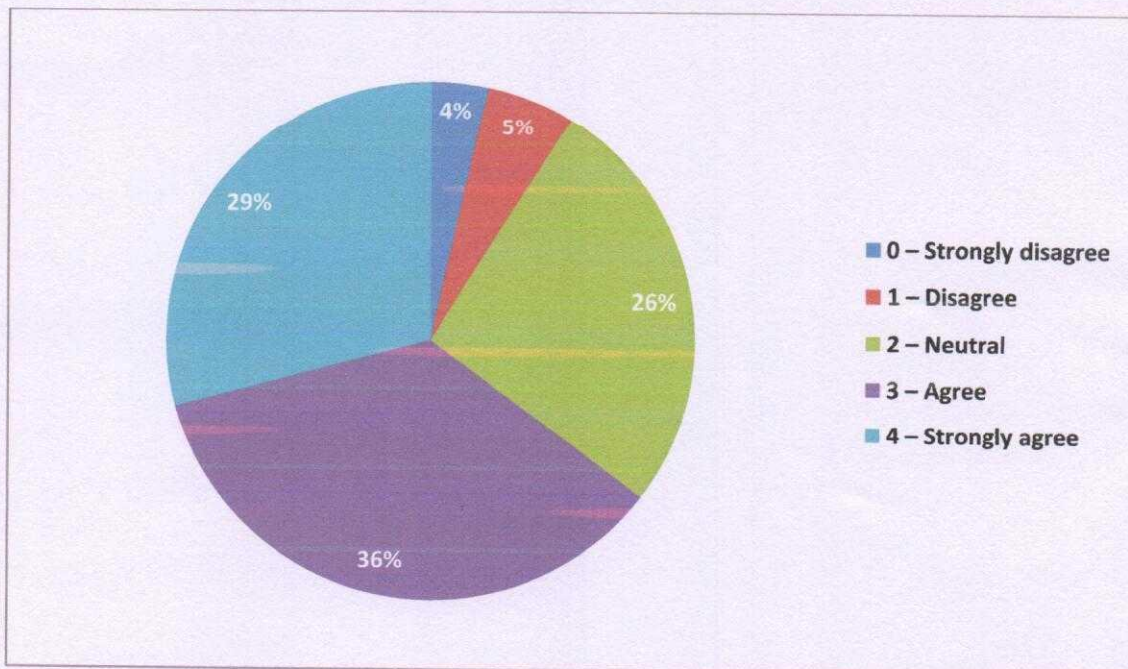


CHART 14: EFFORTS ARE MADE BY THE INSTITUTE/ TEACHERS TO INCULCATE SOFT SKILLS, LIFE SKILLS AND EMPLOYABILITY SKILLS TO MAKE YOU READY FOR THE WORLD OF WORK

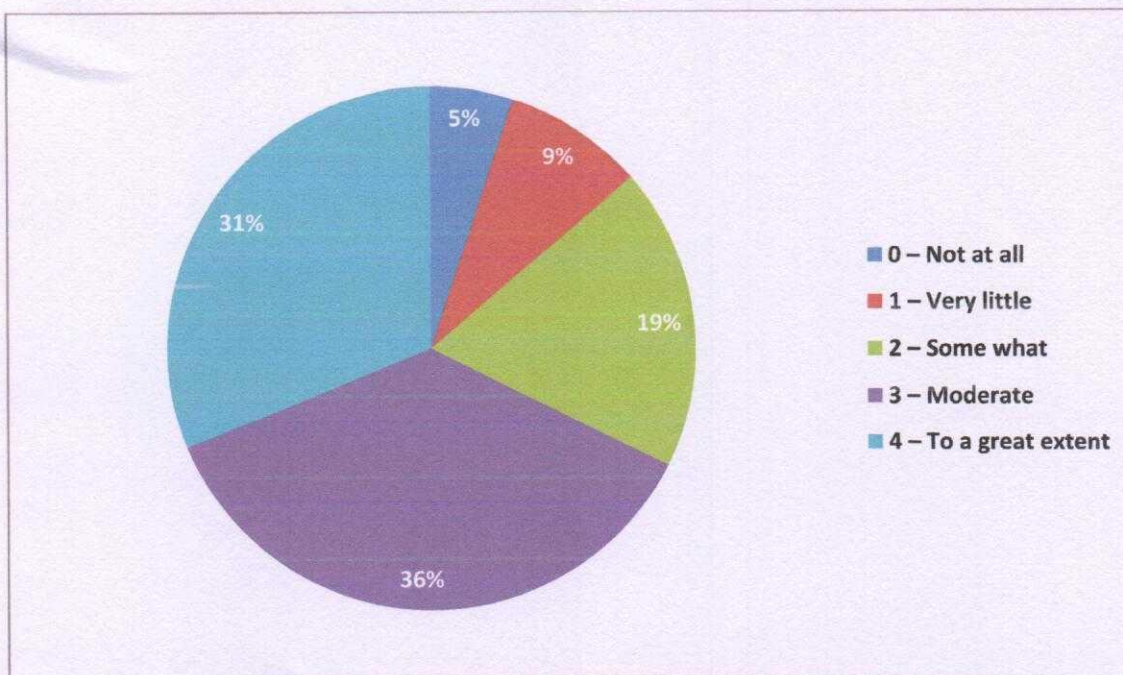


CHART 15: WHAT PERCENTAGE OF TEACHERS USE ICT TOOLS SUCH AS LCD PROJECTOR, MULTIMEDIA, ETC. WHILE TEACHING.

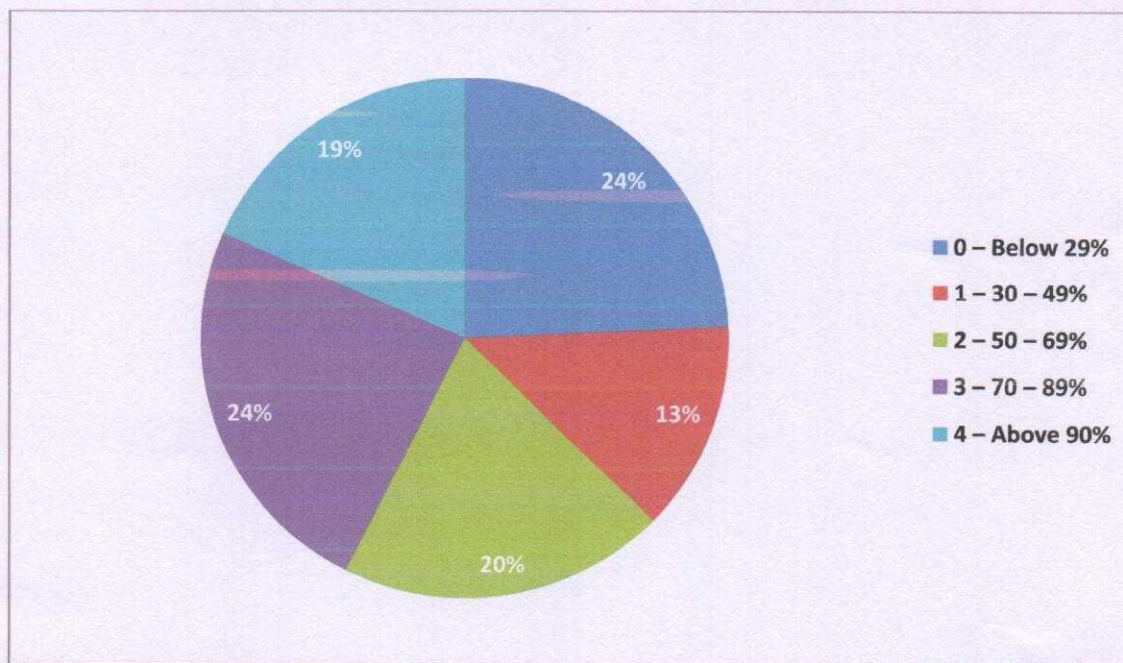


CHART 16: THE OVERALL QUALITY OF TEACHING-LEARNING PROCESS IN YOUR INSTITUTE IS VERY GOOD.

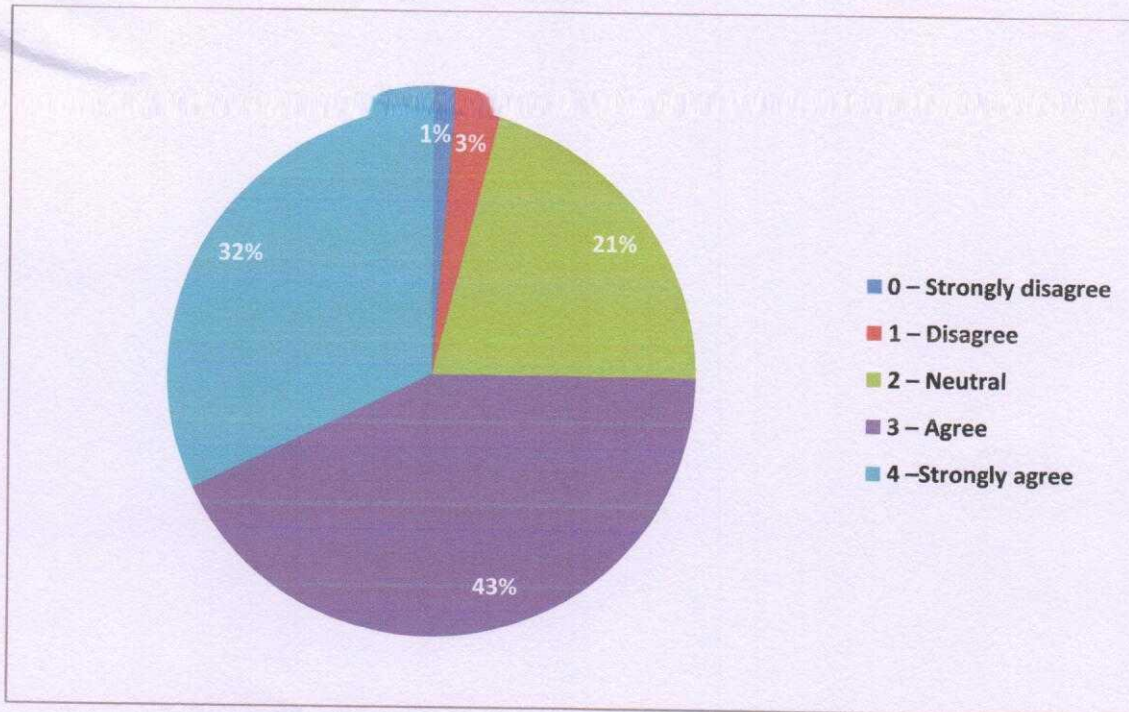


CHART 17: HOW SATISFIED ARE YOU WITH THE ONLINE TEACHING PLATFORM PROVIDED BY COLLEGE?

Rate on a scale of 0 (not at all, minimum, unfavourable) to 4 (greatly, maximum, very favourable).

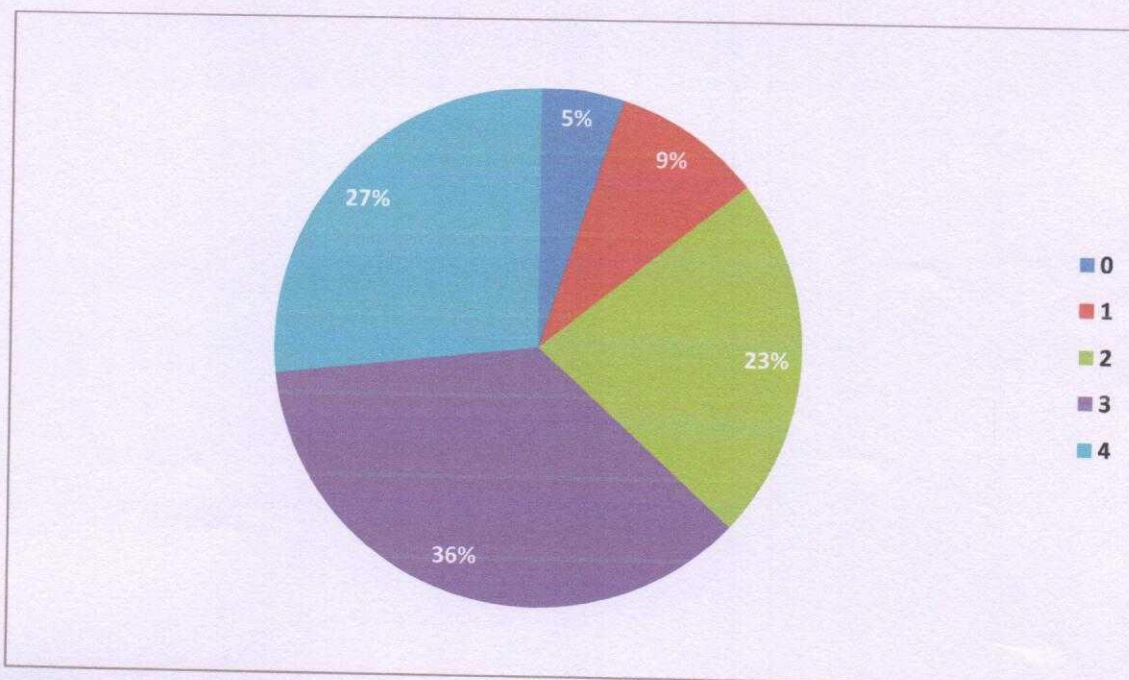


CHART 18: WERE YOUR QUERIES REGARDING ONLINE PLATFORM ADDRESSED BY THE COLLEGE?

Rate on a scale of 0 (not at all, minimum, unfavourable) to 4 (greatly, maximum, very favourable).

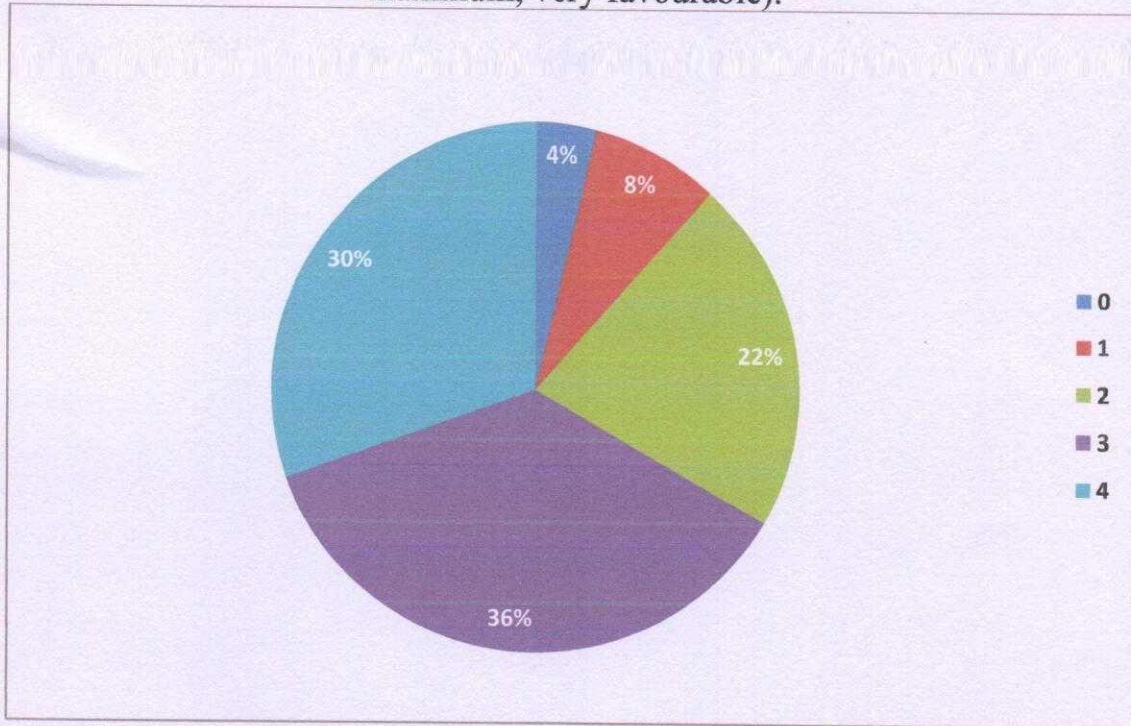


CHART 19: COLLEGE FACILITIES

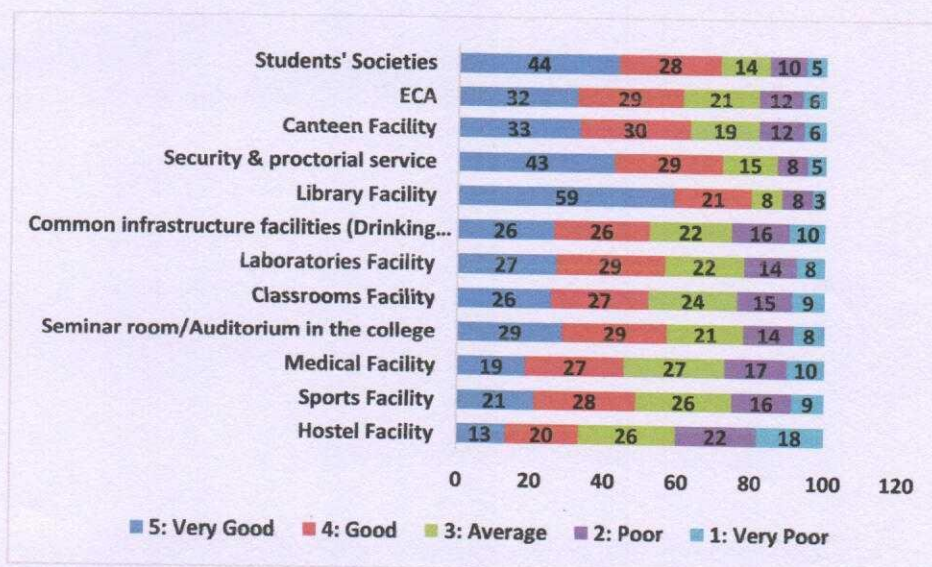
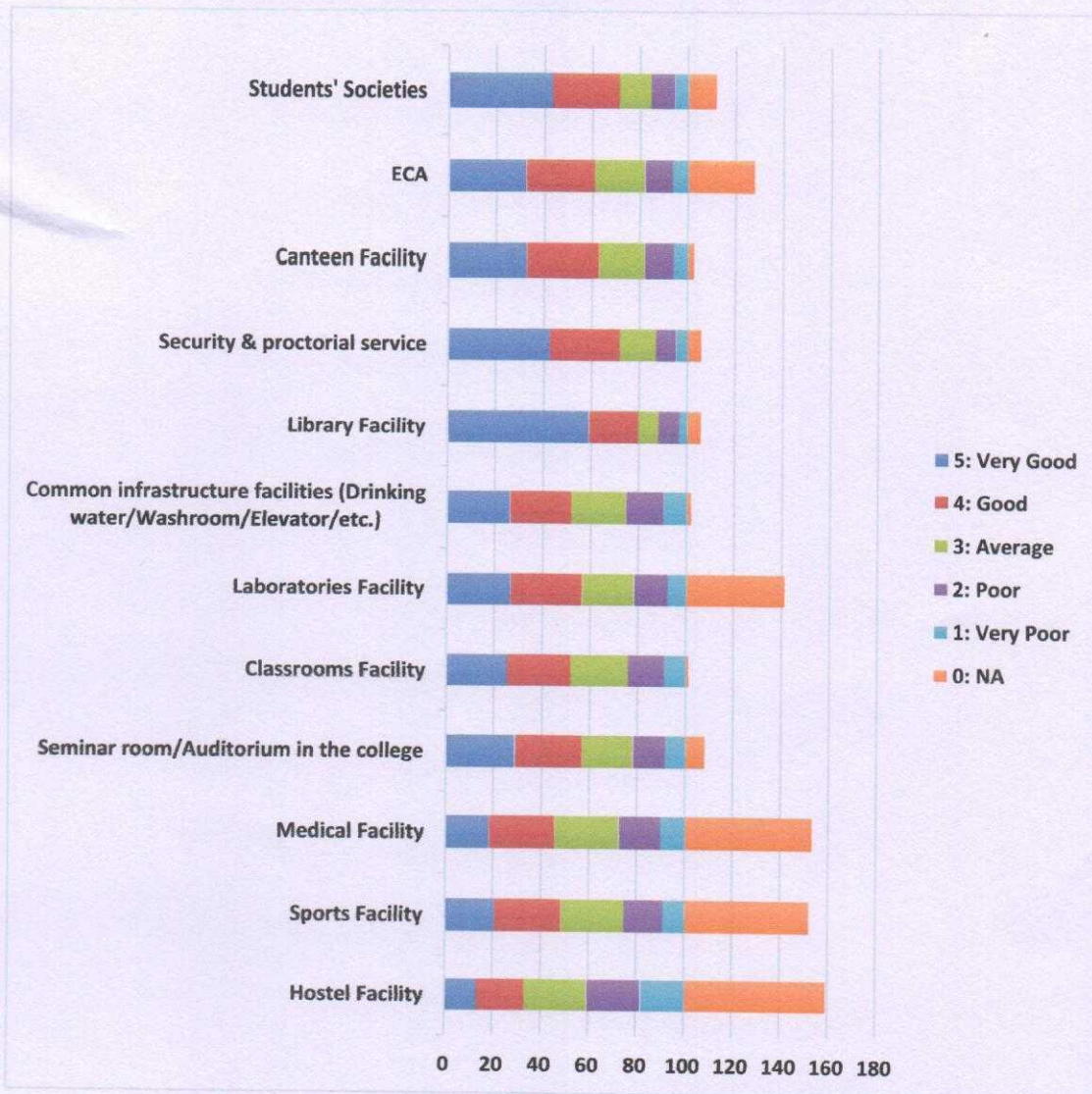


CHART 20: THE INSTITUTION MAKES EFFORT TO ENGAGE STUDENTS IN THE MONITORING, REVIEW AND CONTINUOUS QUALITY IMPROVEMENT OF THE TEACHING LEARNING PROCESS

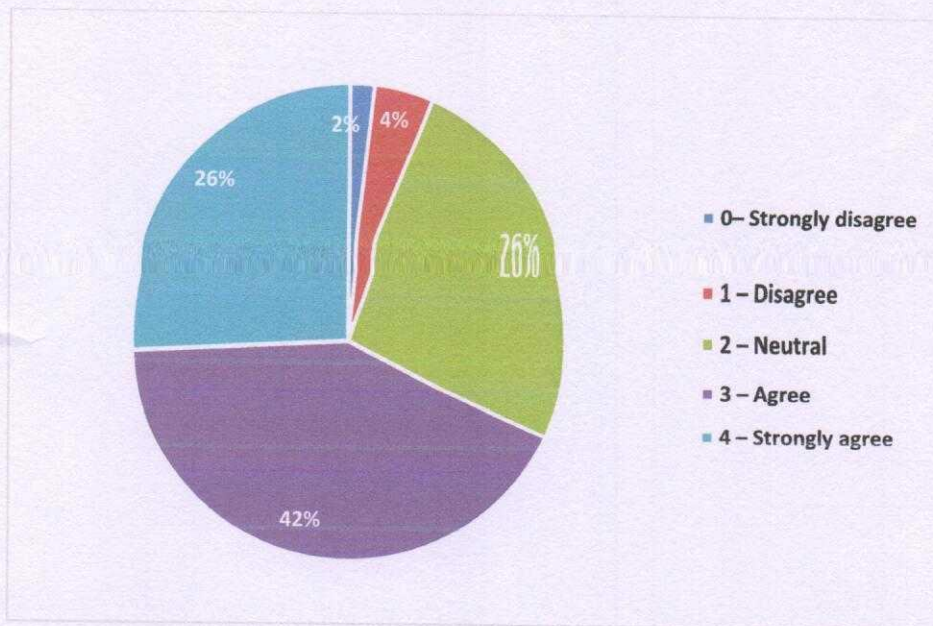


CHART 21: THE INSTITUTION PROVIDES MULTIPLE OPPORTUNITIES TO LEARN AND GROW

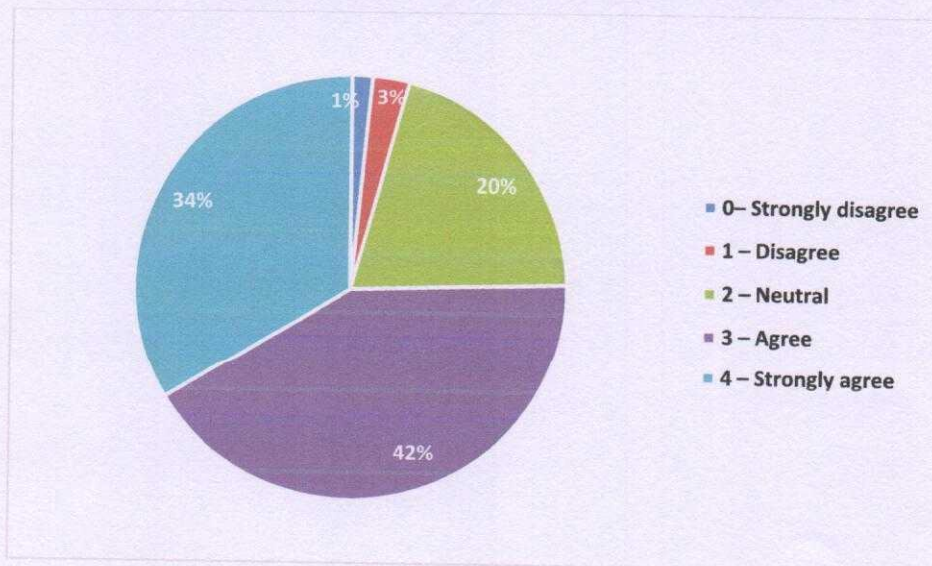


CHART 22: THE INSTITUTION MAKES EFFORT TO ENGAGE STUDENTS IN THE MONITORING, REVIEW AND CONTINUOUS QUALITY IMPROVEMENT OF THE TEACHING LEARNING PROCESS

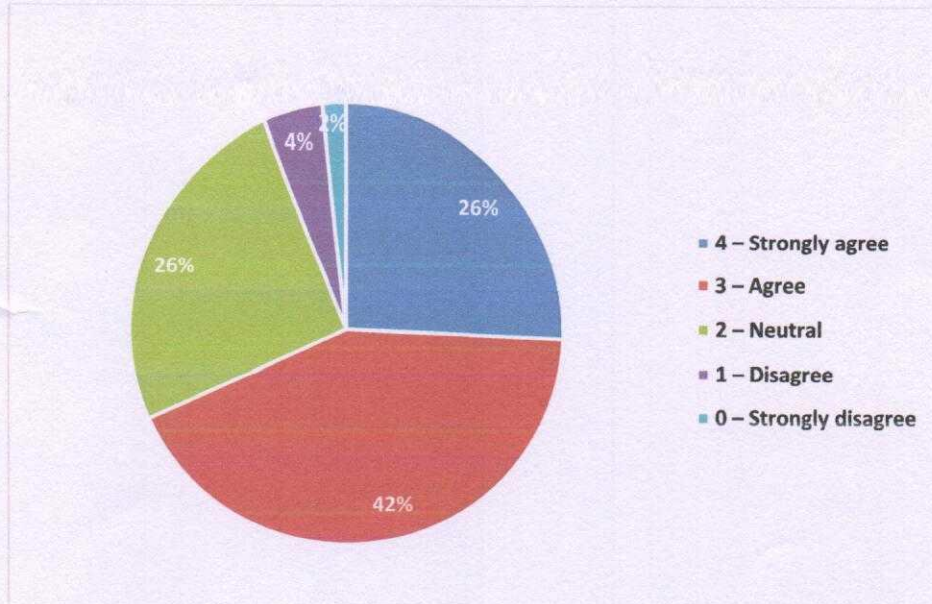
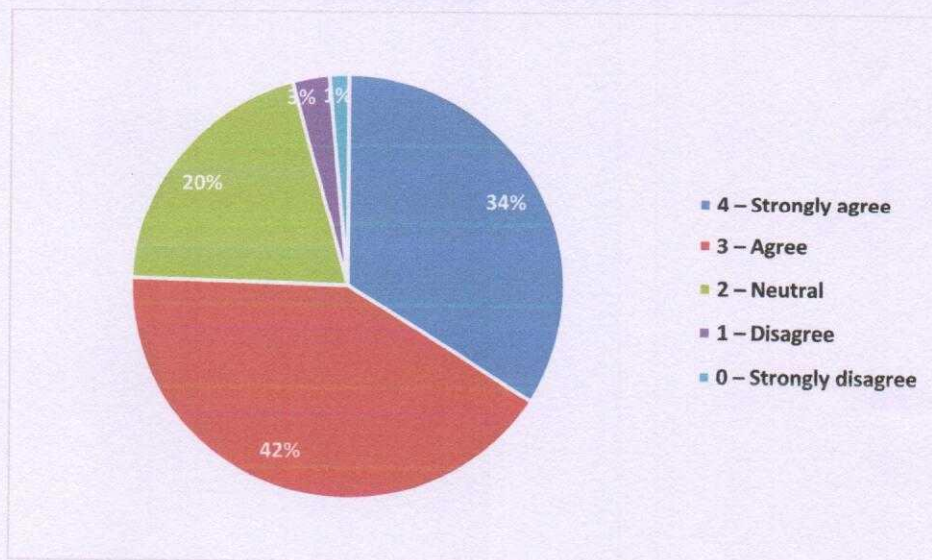


CHART 23: THE INSTITUTION PROVIDES MULTIPLE OPPORTUNITIES TO LEARN AND GROW



Handwritten signature

Handwritten signature

प्रो. (प्रधानाचार्य) रमा
 Prof. (Principal) Rama
 हंसराज कॉलेज/Hansraj College
 दिल्ली विश्वविद्यालय/University of Delhi
 दिल्ली-110007/Delhi-110007